

# OBE information

## WHAT IS OBE?

Outcomes-based education is a learner-centered approach to education that focuses on what a student should be able to do in the real world upon completion of their course or program.

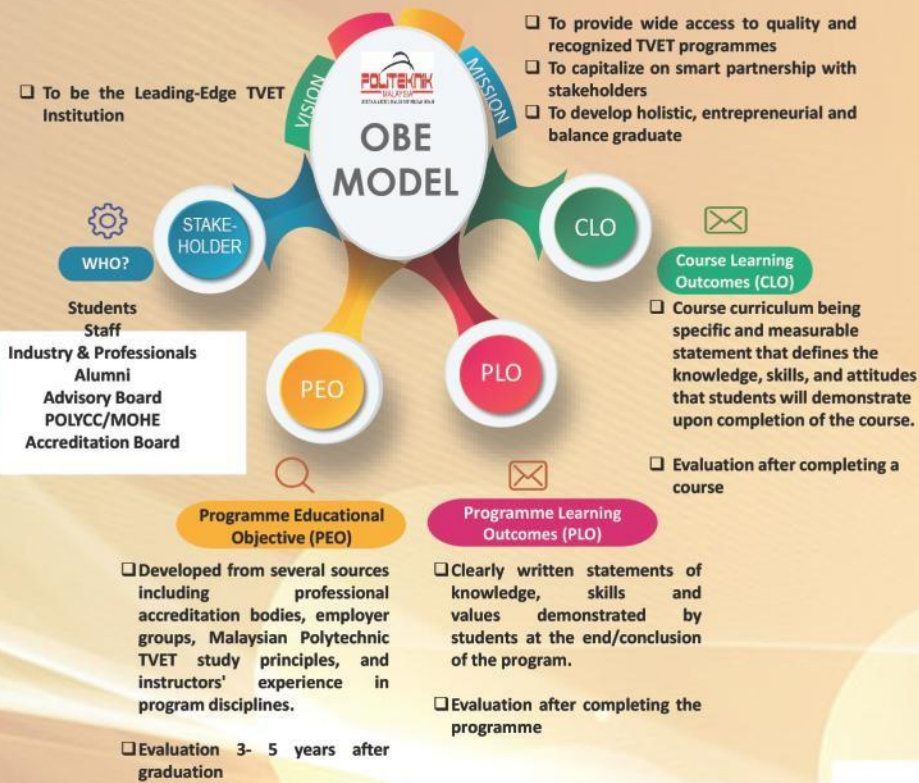
Learning outcomes are complex statements of the primary skills, knowledge, attitudes, abilities and proficiencies the learner will "own" at the end of the course.



## TRADITIONAL EDUCATION AND OBE

Aspect	Pendidikan Tradisional	Vs	Pendidikan Berasaskan Hasil
Learner Attribute	Passive, rote learning, reliance on past years' questions		Learn with purpose/outcome in mind
Instructional Planning Process	Mainly cognitive domain		Cognitive, affective and psychomotor
Curriculum Design & Delivery	Adhere to rigid syllabus and curriculum		Facilitate student's learning to achieve CO
Assessment Method	Follow the norm and/or lecturer's preference		Use appropriate tools/tasks to support CO attainment
Outcome Orientation	Produce learners with adherence to curriculum and delivery methods		Enhance learning experience using assessment tasks with rubric

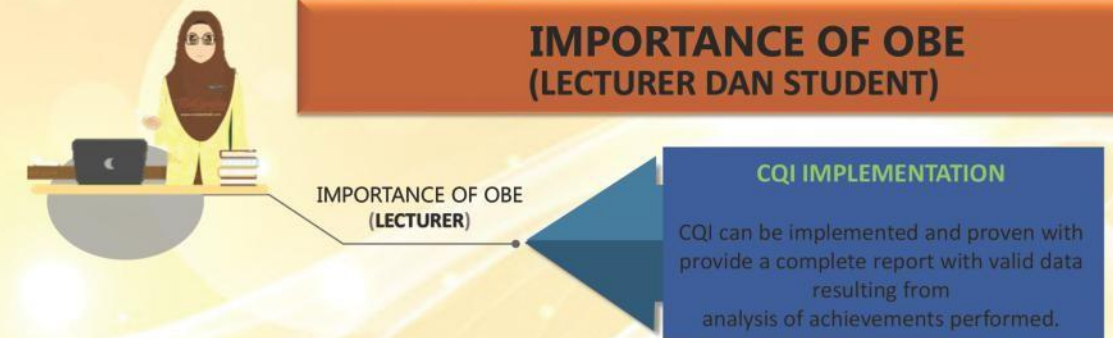
## OBE HIERARCHY MODEL



## DETERMINE THE OUTCOME



## IMPORTANCE OF OBE (LECTURER DAN STUDENT)



## CONTINUOUS QUALITY IMPROVEMENT (CQI)

